

## Nestle Philippines (Inc.) Bio Amp Case Study



### Nestle Philippines (Inc.)

P700-million new ice cream and chilled dairy factory in Pullan, Bulacan in a major initiative to beef up its production capabilities to serve local market demand with world-class quality products appealing to the Filipino taste.

Company: **Nestle Philippines (Inc.)**

Industry: **Food Processing**

Period: **January 2010 - 2011**

Area: **Brgy. Tibag, Pulilan, Bulacan**

## Case Study

### PROBLEM:

#### JAN 2010

- BOD level of 1,400 mg/l.
- COD level of 5,020 mg/l.
- TSS level of 703 mg/l.
- Sludge hauling 3x per week
- WTP foul odors reached 500 meters away

### SOLUTION:

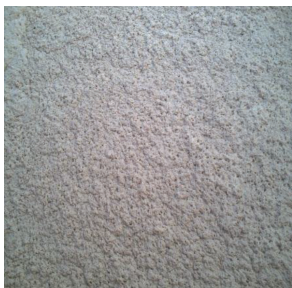
Six (6) Bio-Amp units  
two (2) units to dose every cycle at 8 hours interval.

### RESULT:

- BOD went down to 28 mg/l.
- COD went down to 61 mg/l.
- TSS went down to 30 mg/l.
- Sludge hauling 1x per week.
- Foul odors was reduced.

### GOV'T EFFLUENT STANDARD:

- BOD – 50 mg/l.
- COD – 100 mg/l.
- TSS – 70 mg/l.



January 2010



March 2010



May 2010



July 2010

### MEGA DISTRIBUTORS

PO Box 10185  
North Shore Mail Centre  
Auckland 0745  
Phone: 09 473 6505  
Fax: 09 473 6501  
Email: sales@megadistributors.co.nz

[www.megadistributors.co.nz](http://www.megadistributors.co.nz)



## Nestle Philippines (Inc.) Bio Amp Case Study

Cost Summary	Savings / ROI
Cost of six (6) Bio-Amp units per month USD3,000.00	Fines and Surcharges @ USD100 per violation per day or USD9,000 per month. Savings of USD6,000 per month
Sludge hauling for USD50/haul @ 3x per week haul or USD600/month	Reduced to 1x per week sludge hauling @ USD50/haul or USD200/month. Savings of USD400/month
<b>TOTAL SAVINGS: 6,400 per month or 76,800 USD per year</b>	

### MEGA DISTRIBUTORS

PO Box 10185  
North Shore Mail Centre  
Auckland 0745  
Phone: 09 473 6505  
Fax: 09 473 6501  
Email: sales@megadistributors.co.nz

[www.megadistributors.co.nz](http://www.megadistributors.co.nz)

