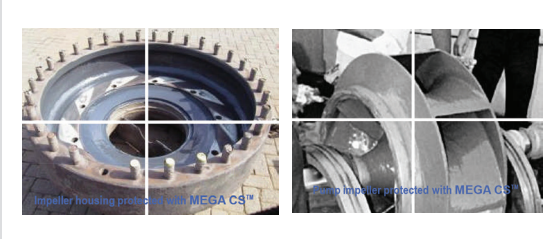


## Wear-Resistant Machinable Ceramic Polymer Compound



### Superior surface repair and protection in one.

- Extra-hard ceramic particles
- Fiber reinforced
- Superior adhesion even when damp
- Ready for use in 4 to 6 hours\*
- Renewable

## Description

Wear-Resistant Machinable Ceramic Polymer Compound MEGA CS is a ceramic-filled high-tech polymer compound designed to rebuild and protect surfaces from fine particle abrasion, corrosion and cavitation.

It is made of ultra-hard aluminium oxide ceramic particles and a state-of-the-art polymer matrix. Mega CS is very easy to mix and apply. It bonds well to steel, aluminium, cast iron, stainless steel, nickel and copper alloys, ceramic and concrete.

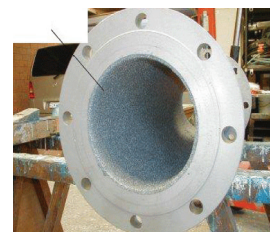
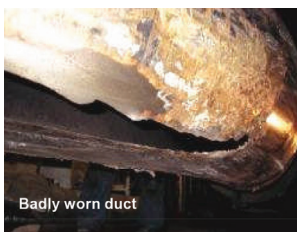
## Features and Benefits

- Extra-hard ceramic particles provide maximum resistance against fine particle abrasion, cavitation, erosion and frictional wear
- Fiber reinforced polymer contains ceramic fibers and various-size particles to increase strength and toughness
- Superior adhesion even when damp minimal surface preparation
- Ready for use in 4 to 6 hours\* cures fast, reduces downtime
- Renewable can be applied over itself.

**WARNING:** Consult the label for full instructions and precautions before using this product.

### APPLICATIONS

Pump housing and impellers	Mixing blades	Pneumatic conveyor pipes and elbows
Hydro turbine housings and impellers	Tank linings	Pipes and pipe bends
Cyclones	Shafts	Eroded valve covers
Water discharge nozzle	Valve bodies	Eroded flange faces
Glass-lined sheets	Condenser tube sheets	Eroded landing seats
Glass-lined pipes	Cort nozzles on ships	Worn chutes



### MEGA DISTRIBUTORS

PO Box 10185  
North Shore Mail Centre  
Auckland 0745  
Phone: 09 473 6505  
Fax: 09 473 6501  
Email: sales@megadistributors.co.nz

[www.megadistributors.co.nz](http://www.megadistributors.co.nz)



## Wear-Resistant Machinable Ceramic Polymer Compound

SPECIFICATIONS	
Compressive Strength (ASTM D695)	14,000 psi/ 96Nmm2
Tensile Strength (ASTM D638)	6,000 psi/ 41Nmm2
Tensile Lap Shear (ASTM D1002)	2,000 psi/ 13Nmm2
Flexural Strength (ASTM D790)	9,000 psi/ 62Nmm2
Maximum Operating Temperature	1770C
Heat Deflection Temperature (ASTM 648)	790C
Hardness (ASTM D2240)	84-87 Shore D
Machinability	Carbide tools required
Working Time	30 minutes at 250C
Curing Time	4-6 hrs. at 210C (less at Badly worn duct Repaired and protected with MEGA CS temperatures over 380C)
Coverage @ 1/8" (3mm) thick	109 sq.in.
Color	Light Gray
Mix Ratio (by volume)	4 parts base : 1 part activator
Mix Ratio (by weight)	100 g. base : 19 g. activator
2.27Kgs Kit Includes putty knife, instruction manual, gloves and towels, in a fold flat box for a mixing surface	

### MEGA DISTRIBUTORS

PO Box 10185  
North Shore Mail Centre  
Auckland 0745  
Phone: 09 473 6505  
Fax: 09 473 6501  
Email: sales@megadistributors.co.nz

[www.megadistributors.co.nz](http://www.megadistributors.co.nz)